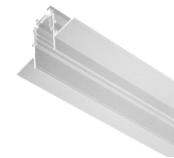




**Magnet track surface**

W: 26mm H: 53mm

- 1m 4660
- 2m 4662
- 1m 4659
- 2m 4661



**Magnet track recessed**

W: 72mm x H: 55mm

- 1m 4664
- 2m 4666
- 1m 4663
- 2m 4665



x2

**End cap surface**

L: 53mm W: 26.6mm H: 2mm

- 4650
- 4649

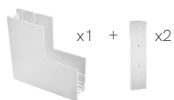


x2

**End cap recessed**

L: 52mm W: 32mm H: 2mm

- 4648
- 4647

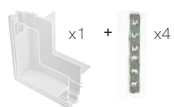


x1 + x2

**L joint wall ceiling surface**

L: 100mm W: 100mm H: 26mm

- 4638
- 4637

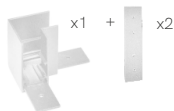


x1 + x4

**L joint wall ceiling recessed**

L: 100mm W: 100mm H: 72mm

- 4642
- 4641



x1 + x2

**L joint ceiling surface**

L: 40mm W: 40mm H: 53mm

- 4644
- 4643



x1 + x4

**L joint ceiling recessed**

L: 100mm W: 100mm H: 55mm

- 4640
- 4639



New

**Curve magnet track surface**

W: 26mm H: 53mm

- R500 1/4 5317
- R500 1/4 5319



New

**Curve track end cap**

L: 53mm W: 26.6mm H: 2mm

- 5428
- 5427



**Linear joint surface**

L: 80mm W: 22.5mm H: 2mm

- 4654
- 4653



x2

**Linear joint recessed**

L: 70mm W: 11.5mm H: 1mm

- 4655



**Start connector**

L: 98mm W: 18mm H: 18mm

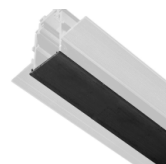
- 4658
- 4657



**Central corner connector**

L: 98mm W: 18mm H: 18mm

- 4646
- 4645



**PVC trim**

W: 26.8mm H: 3.5mm

- 1m 4651
- 2m 4652



**Suspension kit**

L: 45mm W: 22mm | Ø15mm H: 1.900mm

- 4807