



\*End cap and power supply included

**Three phase track recessed**

W: 56mm H: 33mm

- 2m 3897
- 3m 3898
- 2m 4753
- 3m 4754



**Track ceiling recessed**

L: 64mm W: 25mm H: 32mm

- 3805



**Track power supply recessed**

L: 98mm W: 56,5mm H: 33,7mm

- Left 4975
- Right 4976
- Left 4977
- Right 4978



**Joint track without spacing**

L: 68mm W: 25mm H: 27mm

- 3372
- 3618



**Joint track with spacing recessed**

L: 166mm W: 56,5mm H: 33,7mm

- 4963
- 4964



**Flexible joint track**

L: 245mm W: 35mm H: 32mm

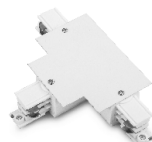
- 3368
- 3619



**L Joint track recessed**

L: 111mm W: 111mm H: 33,7mm

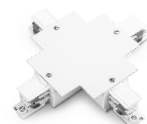
- Left 4965
- Right 4966
- Left 4967
- Right 4968



**T Joint track recessed**

L: 166mm W: 111mm H: 33,7mm

- Left 4969
- Right 4970
- Left 4971
- Right 4972



**X Joint track recessed**

L: 166mm W: 166mm H: 33,7mm

- 4973
- 4974



**End cap**

L: 32mm W: 32mm H: 32mm

- 3370
- 3625



**Three phase adapter**

L: 70mm W: 40mm H: 41mm

- 3371-V2
- 3624-V2



**Three phase recessed base**

L: Ø130mm H: 60mm Ø110mm

- 3851
- 3852

\*Need Three Phase Surface Base (4700 or 4701) to put inside.

