

Tram track

technical lighting

Technical Data

Spotlight for three phase track with UGR <19.

Light

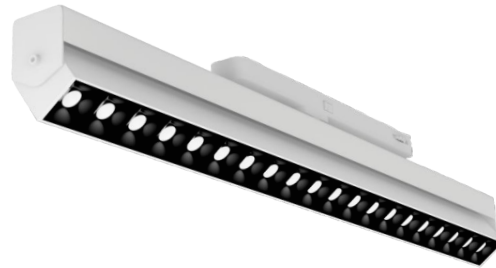
LED in 3.000K or 4.000K.

Finishes

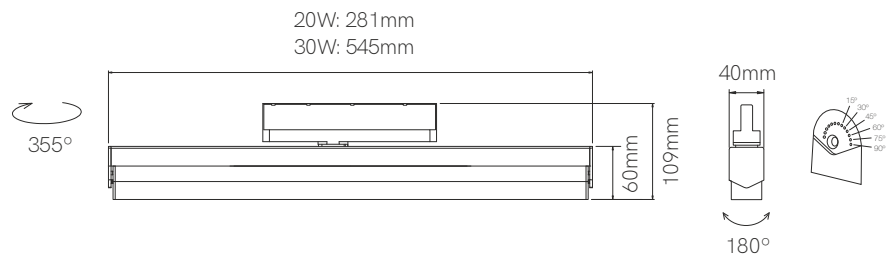
Matt white and black. Aluminium.



Tram 20W



Tram 30W



20 IP	220/240 VAC	30.000 HOURS	UGR <19
>0,9 PF	≥80 CRI		45°
50/60 Hz	+45°C -20°C		1/10

Tram 20W:



Tram 30W:



	Code	Color	Power	CCT	Lumens
Tram 20W	4427	○ White	20W	3.000K	2.320 lm
	4428	○ White	20W	4.000K	2.400 lm
	4429	● Black	20W	3.000K	2.320 lm
	4430	● Black	20W	4.000K	2.400 lm
Tram 30W	4541	○ White	30W	3.000K	3.520 lm
	4542	○ White	30W	4.000K	3.600 lm
	4543	● Black	30W	3.000K	3.520 lm
	4544	● Black	30W	4.000K	3.600 lm

