



*End cap and power supply included

Three phase track recessed

W: 56mm H: 33mm

- 2m 3897
- 3m 3898
- 2m 4753
- 3m 4754



Track ceiling recessed

L: 64mm W: 25mm H: 32mm

- 3805



Track power supply recessed

L: 98mm W: 56,5mm H: 33,7mm

- Left 4975
- Right 4976
- Left 4977
- Right 4978



Joint track without spacing

L: 68mm W: 25mm H: 27mm

- 3372
- 3618



Joint track with spacing recessed

L: 166mm W: 56,5mm H: 33,7mm

- 4963
- 4964



Flexible joint track

L: 245mm W: 35mm H: 32mm

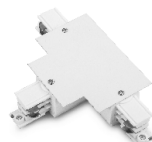
- 3368
- 3619



L Joint track recessed

L: 111mm W: 111mm H: 33,7mm

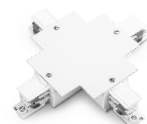
- Left 4965
- Right 4966
- Left 4967
- Right 4968



T Joint track recessed

L: 166mm W: 111mm H: 33,7mm

- Left 4969
- Right 4970
- Left 4971
- Right 4972



X Joint track recessed

L: 166mm W: 166mm H: 33,7mm

- 4973
- 4974



End cap

L: 32mm W: 32mm H: 32mm

- 3370
- 3625



Three phase adapter

L: 70mm W: 40mm H: 41mm

- 3371-V2
- 3624-V2



Three phase recessed base

L: Ø130mm H: 60mm Ø110mm

- 3851
- 3852

*Need Three Phase Surface Base (4700 or 4701) to put inside.

