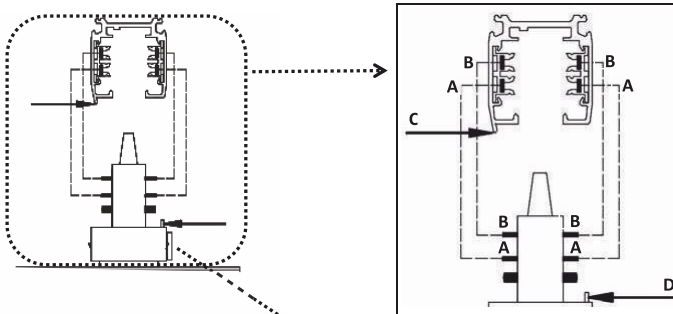
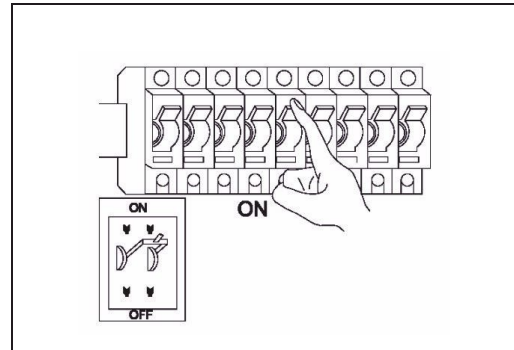
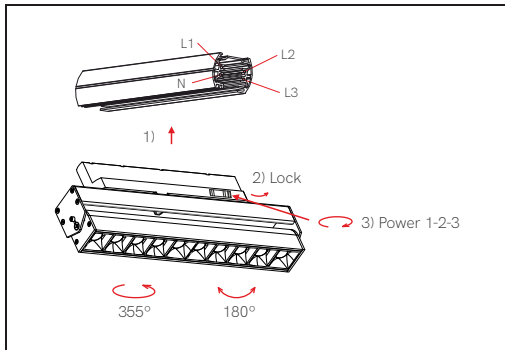
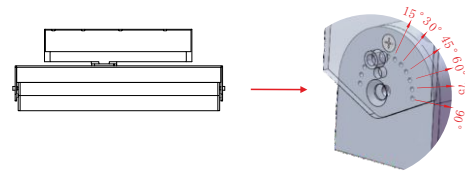
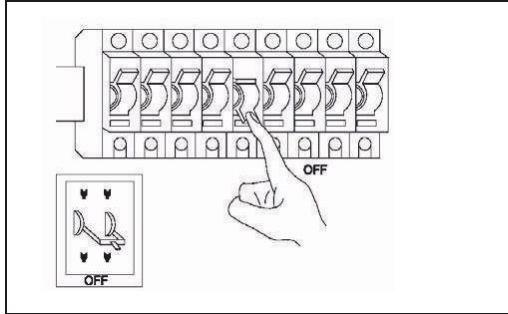


Tram 20W

technical lighting

4427 / 4428 / 4429 / 4430

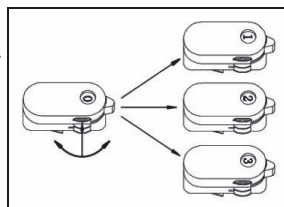


In order to match the A and B both track adapter and track.
Please pay attention C point and D point must be on the opposite direction.

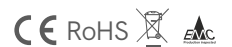


Danger !

Installation by electricians only



Four line three circuit for track adapter.
Select the circuit position.
"0" circuit: No Power, No electricity.
"1" circuit: Power on for circuit "1" .
"2" circuit: Power on for circuit "2"
"3" circuit: Power on for circuit "3" .



>0,9 PF	≥80 CRI	45°	3.000K 2.320lm	4.000K 2.400lm	5 YEARS WARRANTY
220/240 VAC	50/60 Hz	+45°C -20°C	20 IP	30.000 HOURS	UGR <19