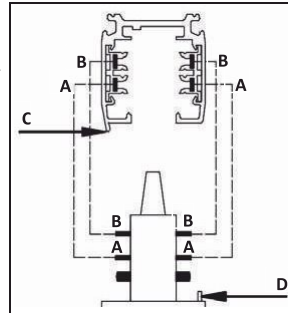
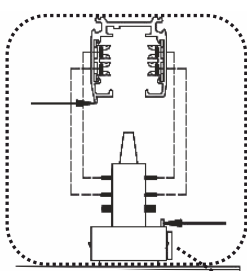
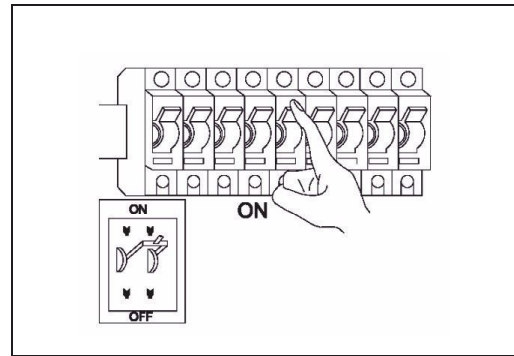
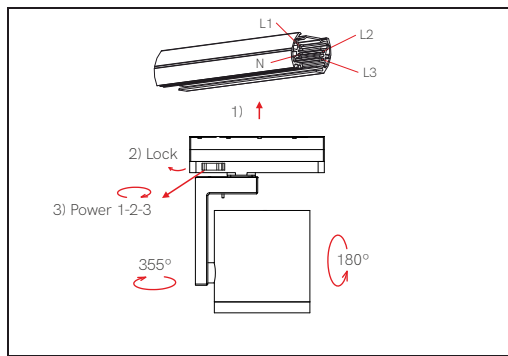
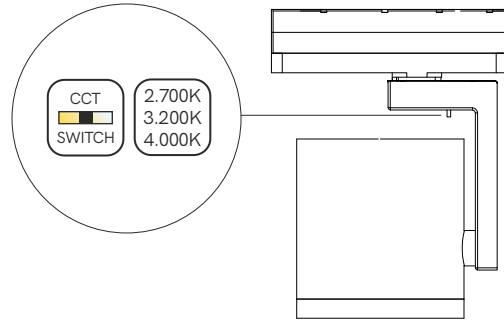
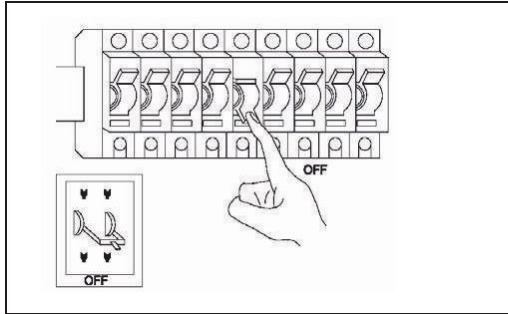


Lena Switch 35W

technical lighting

4449-V2 / 4450-V2

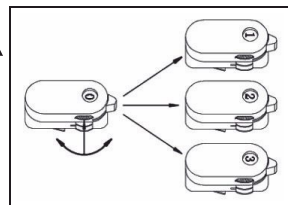


In order to match the A and B both track adapter and track.
Please pay attention C point and D point must be on the opposite direction.



Danger !


Installation by electricians only



Four line three circuit for track adapter. Select the circuit position.

- "0" circuit: No Power, No electricity.
- "1" circuit: Power on for circuit "1".
- "2" circuit: Power on for circuit "2".
- "3" circuit: Power on for circuit "3".

CE RoHS  

>0,9 PF	≥80 CRI	15° 38° 60°	CCT SWITCH	2.700K 3.200K 4.000K	4.200 Lm	3 YEARS WARRANTY
220/240 VAC	50/60 Hz	+50°C -20°C		20 IP	30.000 HOURS	